

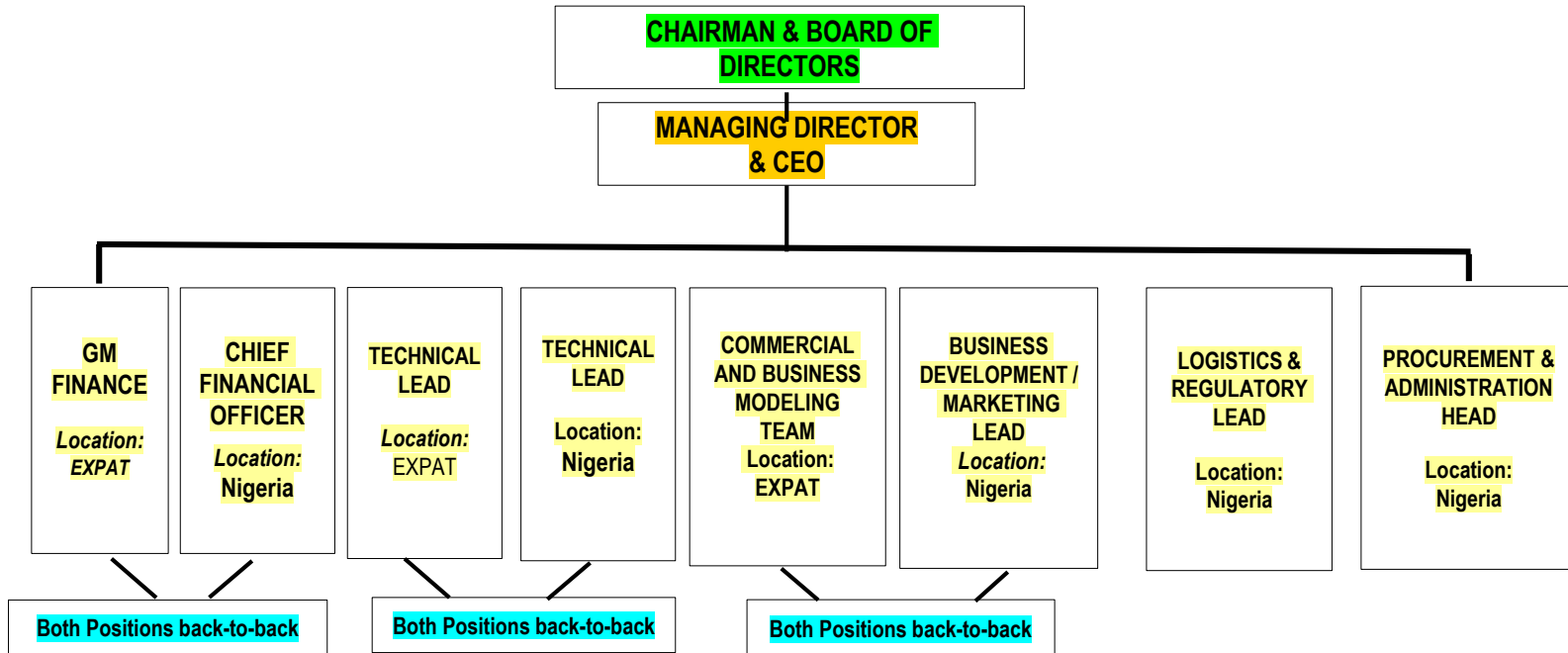
# GULFSTREAM

Exploration & Production Limited





# GROUP ORGANOGRAM

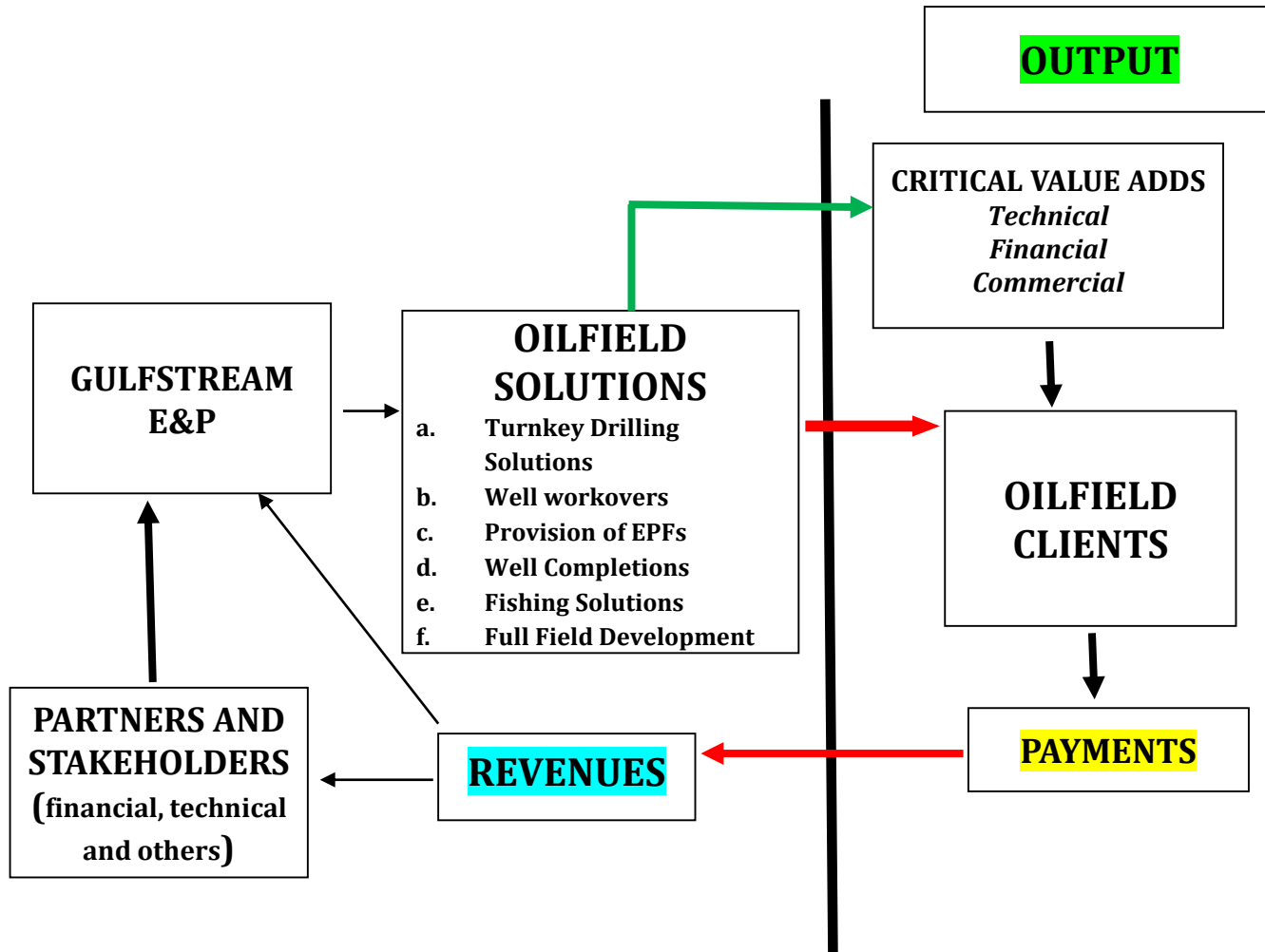


## Back to back positions:

These positions are mirror positions that exist in Nigeria / Gulfstream E & P and EXPAT Positions.

# ASSET MANAGEMENT

## Oilfield Solutions



# OPERATING MODEL



Energy Business development  
Engineering Marketing  
Local Terrain Expertise & Experience  
In-Country Logistics (human and material)  
Regulatory Compliance  
Local Manpower  
Government Liaison  
Visa, STR, Immigration, Customs

Project / Contract Financing  
Engineering Expertise  
Oilfield Equipment & Tools  
Equipment and Tool Spares  
Technical Consumables  
Expatriate manpower when required

**PARTNERS**  
(Technical, Financial,  
Others)

## OILFIELD SOLUTIONS

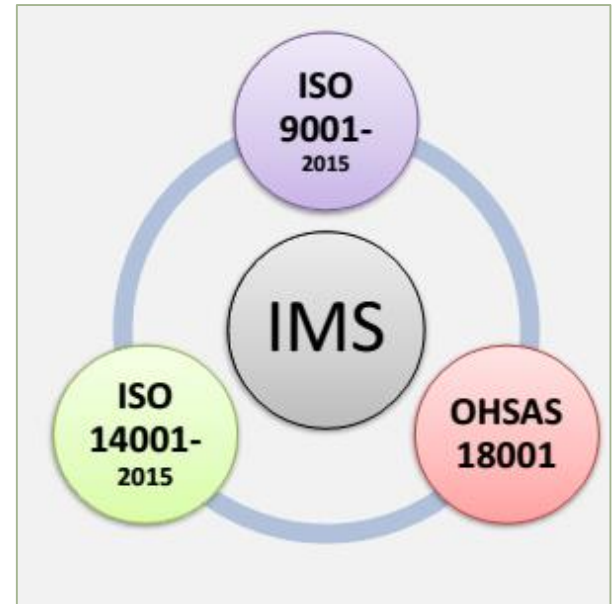
Turnkey Drilling Solutions  
Well workovers  
Provision of EPFs  
Well Completions  
Fishing Solutions  
Full Field Development  
SURF  
OSV and Marine Solutions  
Environmental Solutions  
Others

## CLIENTS

- Marginal Field owners / operators
- NNPC / NPDC (NOC)
- Small – Medium Sized Independents
- Proxy / 3<sup>rd</sup> Party Solution Providers

## HSE - IMS

- Zero LTI Target
- Zero harm to Environment and People
- Certified Quality System and 3<sup>rd</sup> Party Stakeholders
- Internationally benchmarked Risk Management
- Compliance with Laws, Standards and Regulations
- Highest Ethical Standards



# CORE BUSINESS



Exploration & Production Services



FPSO & Shipping



QHSE Services



Water Treatment



Product Sales



Engineering & Construction



IT Service

# CORE SERVICES AND COMPETENCIES

- ◆ Geological Reservoir Research
- ◆ Experimental Analysis & Research
- ◆ Unconventional Energy Experimental Technique
- ◆ Unconventional Energy Reservoir Technique
- ◆ Unconventional Oil/Gas Well Stimulation Service

Exploration & Development Research



Drilling & Completion Engineering Technology



Unconventional Energy Technology

Deepwater Industry Capacity

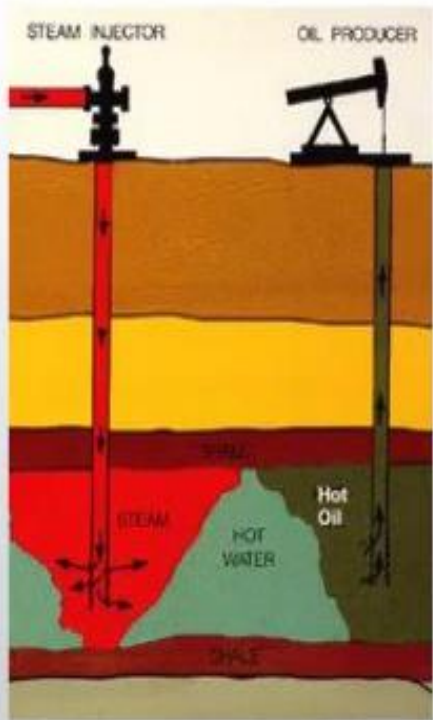
- ◆ Supervision Technology
- ◆ Oilfield Tool Services
- ◆ Drilling Design
- ◆ Wellhead Abandonment Service
- ◆ Well Workover Technology
- ◆ Well Control Service
- ◆ Enhanced Oil Recovery
- ◆ Artificial Lift Technology
- ◆ EOR



# STIMULATION AND EOR (ENHANCED OIL RECOVERY)



# STIMULATION AND EOR (ENHANCED OIL RECOVERY)



Acidizing equipment



Profile control equipment



Fracturing equipment



Nitrogen foam equipment



Polymer injection equipment



Heavy oil thermal recovery equipment



Sand control equipment



Coiled tubing equipment



# ENGINEERING COMPETENCIES

## Oil & Gas Handling / Treatment

- Gathering and Separation
- Facility Design and Engineering (CPP)
- Sweetening
- HC and Water dewpoint adjustment
- Extraction of NGLs (C2, LPG, C5+)
- Flare gas recovery

## Pipeline Transmission

- Natural Gas, Crude Oil, Chemicals
- Pipeline Routing, Design and Flow Assurance
- Compressor / Pumping Stations
- SCADA Systems

## Liquefied Natural Gas (LNG)

- Small scale liquefaction
- Peak shaving Plants
- Facility design and Construction
- Gas to Power
- Inner Tank design and Bunkering

FEASIBILITY STUDIES, FRONT-END ENGINEERING & DESIGN (FEED)	CRUDE OIL SEPARATION
ENGINEERING, PROCUREMENT, CONSTRUCTION & COMMISSIONING (EPCC)	GAS TREATMENT AND CONDITIONING
CUSTOM PROCESS SYSTEMS	HIGH INTEGRITY PRESSURE PROTECTION SYSTEM (HIPPS) - ONSHORE AND OFFSHORE
ENERGY AUDITS & PROCESS OPTIMISATION	PRODUCED WATER TREATMENT
PLANT OPERATIONS	LIFE EXTENSION & ASSET INTEGRITY STUDIES
HAZOP, HAZID, HSEIA, FMEA, COMAH STUDIES AND QRA	CHEMICAL INJECTION SKIDS
SIL STUDIES - EVALUATION/VERIFICATION	WELLHEAD CONTROL PANELS
ICSS/ PLC/ DCS/ESD/ F&G/ SCADA/ BMS SYSTEMS	WATER INJECTION SYSTEMS
CONTROL ROOM HOT CUT-OVER	INSTRUMENT CALIBRATION SERVICES
F&G DETECTION AND SUPPRESSION SYSTEMS	TELECOM SYSTEMS (SATCOM, VSAT, PAGA)
POWER STUDIES & POWER MANAGEMENT SYSTEM	PRODUCTION FACILITY EQUIPMENT
LIQUID AND GAS METERING SKIDS	PROCESS PLANT OPERATIONS
TECHNICAL MANPOWER OUTSOURCING	MV/LV POWER GENERATION AND DISTRIBUTION SYSTEM

# QHSE SUMMARY



# QHSE SERVICES

## QHSE Solutions

We can provide prevention, preparedness, Response, Restoration and Reuse full lifecycle services

### Oil Spill Emergency Response



- ❖ Oil Spill Emergency Preparation and Response;
- ❖ Oil Spill Emergency Drill;
- ❖ Stand - By Oil Containment Boom Service;
- ❖ Equipment Supply and Maintenance;
- ❖ Oil Spill Emergency Plan Establishment;
- ❖ Oil Spill Emergency Training;
- ❖ Oil Spill Emergency Technology Consultation;
- ❖ Professional Vessel Supporting service.

### Environment Restoration



- ❖ Dangerous Chemical Harmless Treatment;
- ❖ Air Pollution Prevention Service;
- ❖ Noise Control Service;
- ❖ Environment Survey Service;
- ❖ Oil - polluted Soil Bioremediation Services;
- ❖ Underground Sewage Control And Remediation .

## **EQUIPMENT, TECHNOLOGY AND LOCAL MANPOWER LOCAL CONTENT STRATEGY**

- **TECHNOLOGY/EXPERTISE TRANSFER & CONSOLIDATION**
  - **Near Term (12 months)**: Jointly execute Projects with skeletal EXPAT technical team (only supervisors, all others local hires)
  - **Medium Term (24 – 48 months)**: ALL ROV operators local hires, EXPAT manpower presence limited to GM (Technical)
  - **Long Term (60 months and beyond)**: Establish regional/GOG facility for technical manpower training, maintenance know-how, training for 3<sup>rd</sup> party corporate and individual personnel

## **CORPORATE SOCIAL RESPONSIBILITY**

We adhere to the highest and strictest safety and security standards for our staff and all stakeholders that operate on our behalf at all our work locations.

We constantly review our HSSE processes and all other safety related policies in line with global best practices.

We have a dedicated inhouse team that oversees safety and security matters as regards our operations.

**LAGOS:**

Plot 6b, Block 110

Olukayode Jacob Street

By General Edwin Street

Lekki Peninsula Phase 1, Lekki – Lagos, Nigeria

T: +234 908 1333 348

+234 908 1333 349

+234 703 3330 673

+234 809 4333 330

E: [gliffeth.wonuigwe@gasgroupintl.com](mailto:gliffeth.wonuigwe@gasgroupintl.com)

**PORT HARCOURT:**

41b, Evo Road, GRA

Port Harcourt, Rivers State, Nigeria

**USA:**

3811 N Bridge St,

Brady, TX 76825, USA